

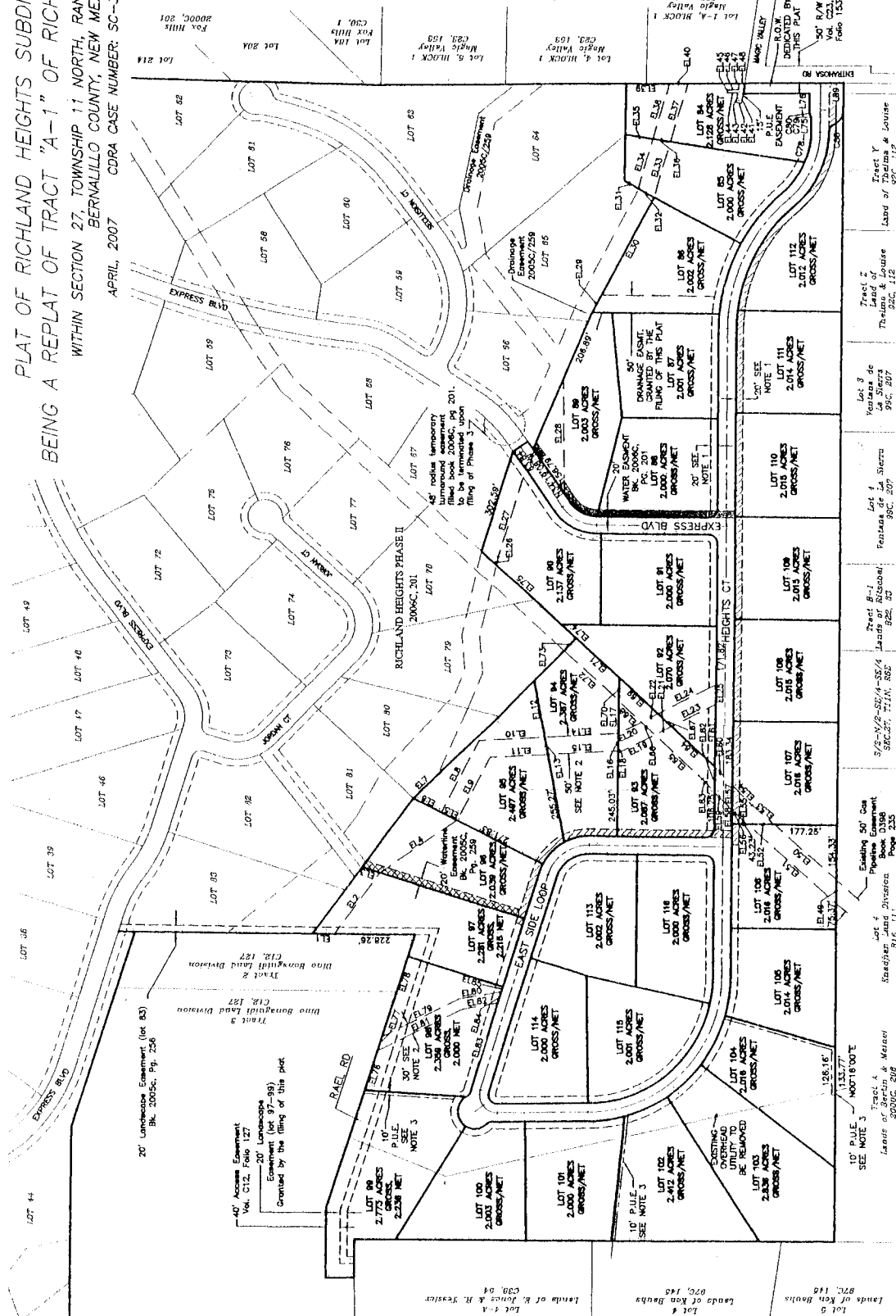
**PLAT OF RICHLAND HEIGHTS SUBDIVISION PHASE III
BEING A REPLAT OF TRACT "A-1" OF RICHLAND HEIGHTS PHASE II**

WITHIN SECTION 27, TOWNSHIP 11 NORTH, RANGE 6 EAST, N.M.P.M.
BERNALILLO COUNTY, NEW MEXICO
CDRA CASE NUMBER: SC-30006 PHASE III
APRIL, 2007

NOTES:
1. 20' PUBLIC UTILITY PAVE & DRAINAGE EASEMENTS GRANTED BY THE FILING OF THIS PLAT.
2. DRAINAGE EASEMENT, AS DIMENSIONED, IS HEREBY GRANTED BY THE FILING OF THIS PLAT.
3. 10' PUBLIC UTILITY EASEMENTS ARE HEREBY GRANTED BY THE FILING OF THIS PLAT.



LEGEND:
--- DRAINAGE EASEMENT
--- 10' PUBLIC UTILITY PAVE & DRAINAGE EASEMENTS GRANTED BY THE FILING OF THIS PLAT.
--- 20' PUBLIC UTILITY PAVE & DRAINAGE EASEMENTS GRANTED BY THE FILING OF THIS PLAT.
--- PROPERTY LINE
--- CENTER LINE



NEW MEXICO SURVEYING CO. INC.
Post Office Box 1066, Sandia Park, New Mexico 87047
Phone: (505) 220-0185
PLAT OF RICHLAND HEIGHTS SUBDIVISION PHASE III WITHIN SECTION 27, TOWNSHIP 11 NORTH, RANGE 6 EAST, N.M.P.M.
DATE: APRIL, 2007
JOB: 07002
DRAWN BY: AMB/BOM
CHECKED BY: SLY
SHEET 3 OF 3 SHEETS
EASEMENTS

EASEMENT LINE TABLE

LINE	LENGTH	BEARING
E169	152.61	N47°07'45"W
E170	67.92	N00°16'21"E
E171	168.46	N47°07'45"W
E172	214.51	N47°07'45"W
E173	50.00	N42°57'24"E
E174	58.21	N47°07'45"W
E175	249.35	N47°07'45"W
E176	114.95	N17°54'50"E
E177	41.67	N17°43'55"E
E178	239.92	N17°43'55"E
E179	14.46	N88°33'50"E
E180	17.41	N80°07'21"E
E181	26.51	N83°35'50"E
E182	103.21	N80°07'21"E
E183	246.78	N17°43'55"E
E184	33.70	N17°33'02"E
E185	15.69	N17°33'02"E

EASEMENT LINE TABLE

LINE	LENGTH	BEARING
E192	76.15	N89°23'35"W
E193	84.15	N48°24'19"W
E194	90.14	N48°24'19"W
E195	28.78	N48°24'19"W
E196	30.86	N43°58'15"W
E197	71.86	S00°16'21"E
E198	41.00	S00°16'21"E
E199	71.86	N43°58'15"W
E200	17.85	N00°16'21"E
E201	49.49	N00°16'21"E
E202	168.13	N43°58'15"W
E203	185.94	N47°07'45"W
E204	51.20	N47°07'45"W
E205	53.20	N47°07'45"W
E206	98.44	N47°07'45"W

EASEMENT LINE TABLE

LINE	LENGTH	BEARING
E135	79.83	N87°24'45"W
E136	50.45	N87°24'45"W
E137	174.87	N161°52'27"E
E138	165.36	N161°52'27"E
E139	125.12	S89°20'08"W
E140	30.28	S89°20'08"W
E141	15.00	N62°35'35"E
E142	35.00	N61°02'21"E
E143	30.00	S89°20'08"W
E144	10.00	N62°35'35"E
E145	31.61	N62°35'35"E
E146	17.85	N62°35'35"E
E147	17.85	N62°35'35"E
E148	15.19	N81°20'02"E
E149	86.30	S00°16'21"E
E150	235.03	N48°24'19"W
E151	336.00	S48°41'01"E

EASEMENT LINE TABLE

LINE	LENGTH	BEARING
E118	15.73	N88°24'16"E
E119	102.03	N82°21'33"E
E120	17.85	N67°31'39"E
E121	53.20	N67°31'39"E
E122	53.20	N67°31'39"E
E123	140.95	N62°31'39"E
E124	184.57	N62°31'39"E
E125	56.33	N62°31'39"E
E126	26.15	N102°48'45"E
E127	236.28	N102°48'45"E
E128	332.48	N102°48'45"E
E129	56.50	N82°01'01"E
E130	318.11	N82°01'01"E
E131	44.81	N81°58'56"W
E132	51.07	N81°58'56"W
E133	164.18	N161°52'27"E
E134	147.05	N161°52'27"E

EASEMENT LINE TABLE

LINE	LENGTH	BEARING
E11	61.88	N82°43'37"W
E12	21.18	N30°36'31"E
E13	34.19	N72°28'58"W
E14	50.00	N63°31'00"E
E15	80.89	N63°31'00"E
E16	97.43	N63°31'00"E
E17	231.54	N63°31'00"E
E18	202.67	N72°01'15"E
E19	184.47	N85°24'16"E
E20	165.78	S10°48'11"E
E21	50.42	S10°48'11"E
E22	209.16	N85°24'16"E
E23	199.46	N85°24'16"E
E24	50.10	N00°16'21"E
E25	95.63	N00°16'21"E